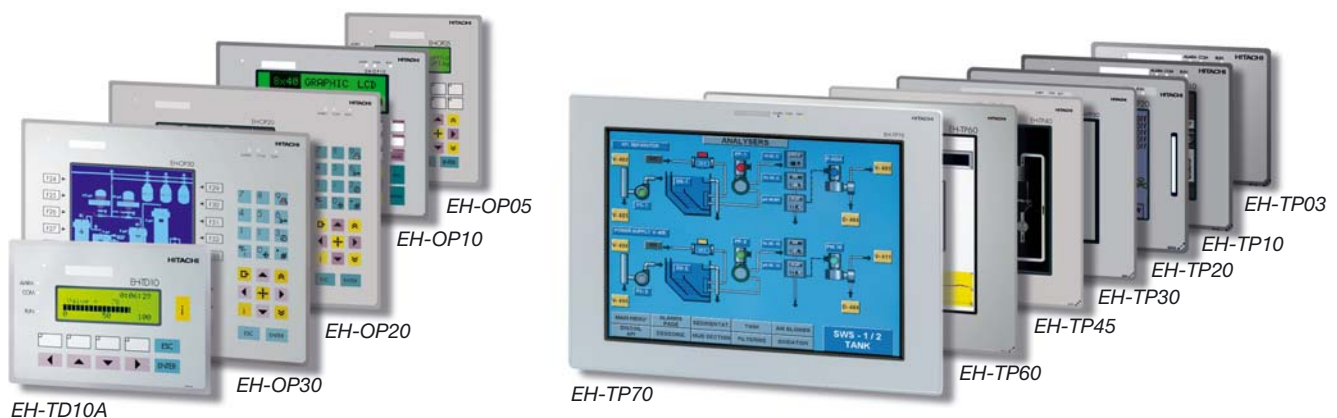


Operator Interfaces

EH-HMI Series

Hitachi's HMI. Operating can not get any easier.

- Universal programming for all panels
- Multi-language programming
- 3.8" – 15.0" Touchscreen
- Recipe capability
- Trending graphics
- Alarm processing
- Fieldbus interfaces (Profibus-DP, DeviceNet, Ethernet, Interbus, CANopen)
- Drivers for Hitachi PLC and Inverter, Siemens Simatic S5/S7, Groupe Schneider SPS (TSX)



EH-HMI Series

Text displays, operator panels and touch panels from Hitachi.

Hitachi offers a wide range of Operator Interfaces which allow you to choose the best technical and economical solution for your application. Twelve models are available, text and graphic displays

as well as touch panels. They are all programmable with the same software. This means additional cost savings and less training requirements.

All features at a glance



		Text Display	Operator Panels			
Type		EH-TD10A	EH-OP05	EH-OP10	EH-OP20	EH-OP30
Communication	HITACHI H+E Series PLCs	•	•	•	•	•
	HITACHI Inverters L/SJ100, L/SJ300	•	•	•	•	•
	Profibus-DP	•	•	•	•	•
	DeviceNet	•	•	•	•	•
	ETHERNET TCP/IP	•	•	•	•	•
	INTERBUS	•	•	•	•	•
	CANopen	•	•	•	•	•
	SIEMENS SIMATIC S5/S7	•	•	•	•	•
	GROUPE SCHNEIDER SPS (TSX)	•	•	•	•	•
Display	Type	LCD monochrome	LCD monochrome	LCD monochrome	LCD monochrome 1/4 VGA	STN Passive Color 1/4 VGA
	Lines x Characters	4 x 20	4 x 20	8 x 40	16 x 40	16 colours
	Resolution	120 x 32 Pixel	120 x 32 Pixel	240 x 64 Pixel	320 x 240 Pixel	16 x 40
	Diagonal size (inches)					320 x 240 Pixel
Keypad	Type	Integral keypad	Integral keypad	Integral keypad	Integral keypad	Integral keypad
	Function / System Keys	4 / 7	12 / 23	23 / 24	33 / 24	33 / 24
Memory	Internal Memory	512 kByte Flash-EPROM	512 kByte Flash-EPROM	512 kByte Flash-EPROM	8 MB SSFDC memory card	8 MB SSFDC memory card
	Pluggable FLASH memory				•	•
Functions	Bargraph and diagram display	•	•	•	•	•
	Full graphics	•	•	•	•	•
	Recipe storage	-	16 kByte	16 kByte	32 kByte	32 kByte
	Battery	-	•	•	•	•
	Password protection	•	•	•	•	•
	Real time clock	-	•	•	•	•
Alarm handling	1024 max.	1024 max.	1024 max.	1024 max.	1024 max.	
Miscellaneous	Printer port	-	•	•	•	•
Port(s)	PLC port	1 x RS-232/422/485/20mA	1 x RS-232/422/485/20mA	1 x RS-232/422/485/20mA	1 x RS-232/422/485/20mA	1 x RS-232/422/485/20mA
	PC port	Uses PLC Port	1 x RS-232	1 x RS-232	1 x RS-232	1 x RS-232
	Baudrate	9,600 baud	38,400 baud	38,400 baud	38,400 baud	38,400 baud
	Aux. port for opt. fieldbus module	•	•	•	•	•
Dimensions	External dimensions (H x W) in mm	109 x 149	176 x 141	176 x 220	220 x 275	220 x 275
Programming	Programming software					

The advantages

- Customized for all Hitachi PLCs and inverters. Drivers for Siemens S5 and S7 and Groupe Schneider PLCs are also included.
- High-resolution graphic displays, easily legible even in bad lighting conditions
- Dust and splash proof enclosures to IP65
- Reduced depth to help with installation
- Customer specific adaptations
- Fieldbus interfaces: Profibus-DP, Interbus, CANopen, DeviceNet, Ethernet



EH-VIEW. The Programming Software for all Hitachi EH-HMI.

The entire family of EH-HMI panels can be programmed with the easy-to-use EH-VIEW software. This minimizes training and development cost.

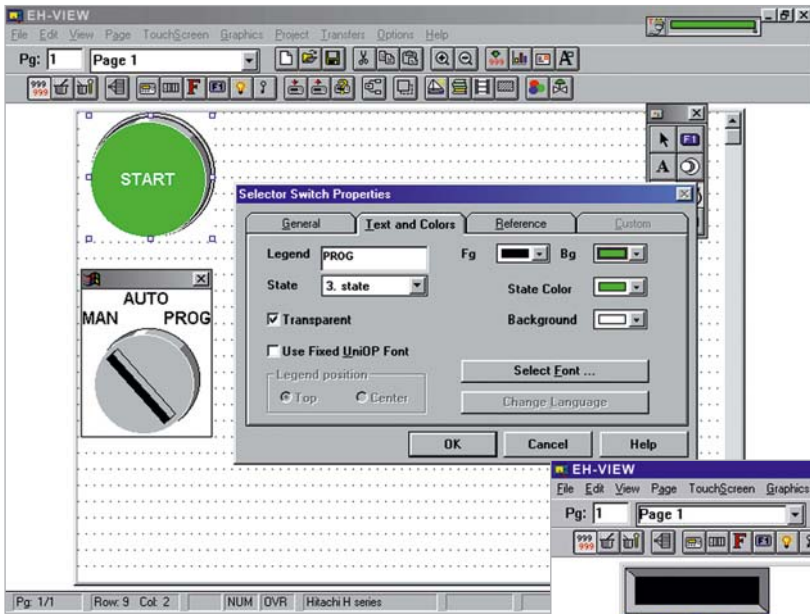
EH-VIEW is a Windows® application with a flexible "WYSIWYG" editor (What you see is what you get) for building the operator panel. The interactive programming environment facilitates adding text, graphics, variables, touch cells and other elements.

Adding simplicity to highly complex instruction sequences is easily performed with the Macro Editor. No extra programming is required, and macros can be initiated simply by the operator's touch.

EH-VIEW integrates a sophisticated recipe management, with full support for multi-page recipes, recipe storing and download. Recipe upload enables the user to capture and store the parameters of an "ideal" recipe by directly loading them from the PLC to the panel.

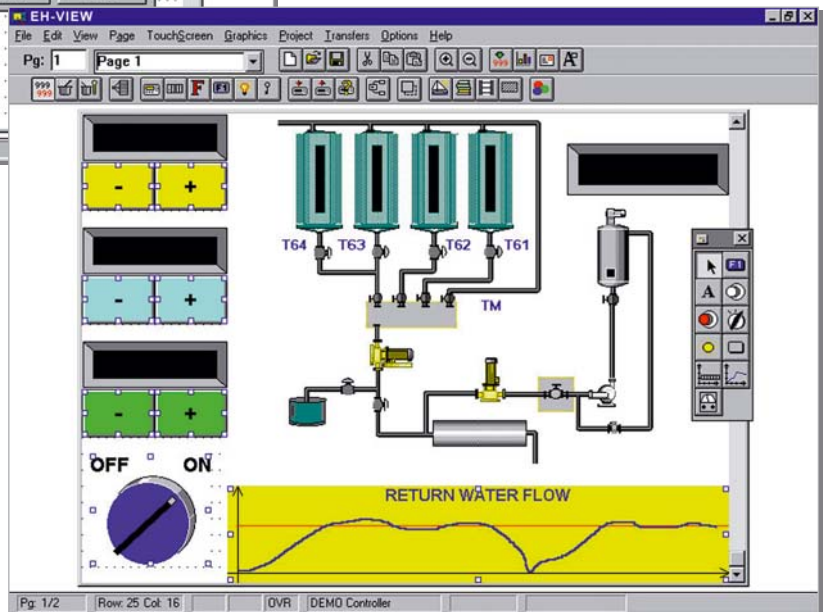
The software's Trending support provides the user with the necessary real-time data to manage the application optimally.

In large applications, it is possible to install a network of Hitachi HMIs and set up an extensive data-exchange network among panels and PLCs.



The result: functional displays for a professional application.

As standard, EH-VIEW includes the most common communication drivers. The definition of PLC type and addressing is straight forward and closely connected to the respective application.



Hitachi Europe GmbH

Am Seestern 18 · D-40547 Düsseldorf
 Tel. +49-211-52 83 -0 · Fax +49-211-52 83 -649
 Internet: www.hitachi-ds.com
 E-Mail: info@hitachi-ds.com